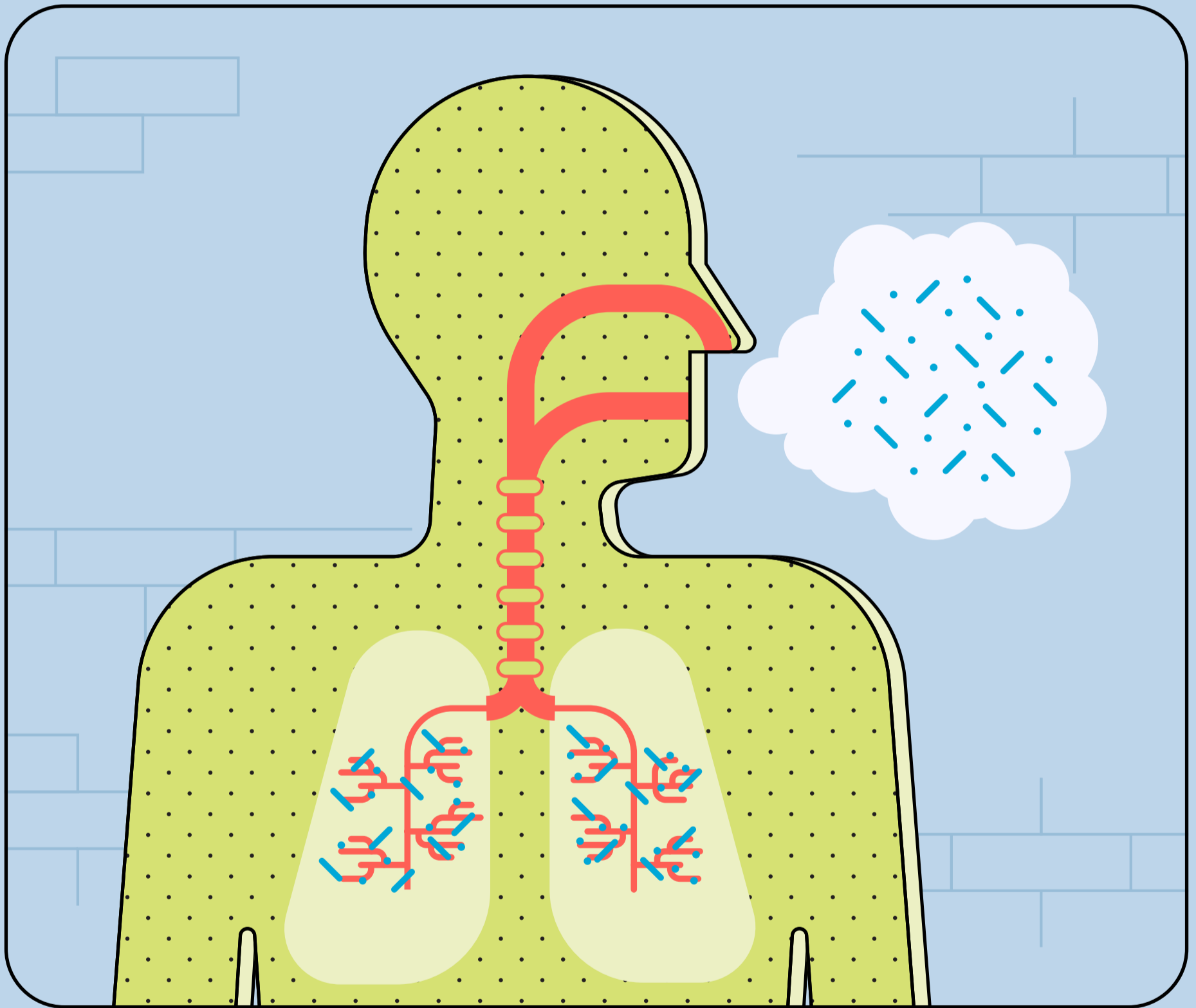


Asbestos Awareness Week

**17-23
NOVEMBER
2025**



Asbestos is New Zealand's number one workplace killer. Around 220 New Zealanders die from asbestos related disease every year.

worksafe.govt.nz/asbestos

Asbestos fibres are invisible to the naked eye, but it doesn't mean it's not there. Don't start work if you're in doubt.

Find out if there is asbestos.

Make sure there's an asbestos management plan.

Get it removed by a professional and licensed removalist.

Your actions today will prevent yourself, workers and others being harmed by asbestos related disease in the future.

WORKSAFE
Mahi Haumarū Aotearoa